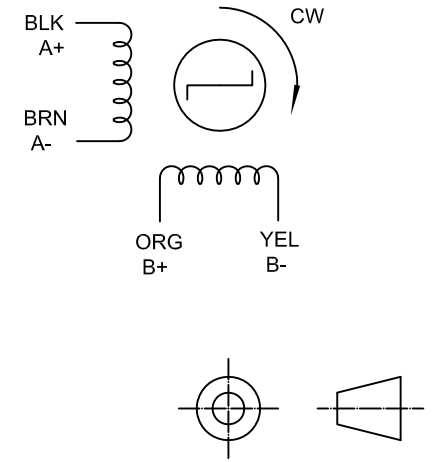


SPECIFICATION	VALUE
NO. OF PHASE	2
AMPS/PHASE	0.5
RESISTANCE/PHASE(Ohms)@25°C	10±7%
INDUCTANCE/PHASE(mH)@1KHz	2.25±20%
HOLDING TORQUE(mN.m)[lb-in]@25°C DC5V	147[1.30]
GEAR RATIO	100
STEP ANGLE W/O GEARBOX(°)	18±7%
MAX. PULL-IN RATE(PPS)@25°C DC5V	1000
PULL-OUT TORQUE(m.Nm)@200PPS 25°C DC5V	68.6
WEIGHT(g)[lb]	14.5[0.03]
INSULATION RESISTANCE(MΩ) @DC 500V	100
TEMPERATURE RISE:MAX.65°C	
AMBIENT TEMPERATURE -10°C~40°C[14°F~104°F]	
INSULATION CLASS E 120°C[248°F]	
DIELECTRIC STRENGTH 650VAC FOR 1SEC.(BETWEEN THE MOTOR COILS AND THE MOTOR CASE )	

FULL STEP 2 PHASE-Ex. ,  
WHEN FACING MOUNTING END (X)

PIN NO.	WIRE COLOR	STEP			
		1	2	3	4
1	YEL	-	-	-	-
2	BRN	-	-	-	-
3	ORG	-	-	-	-
4	BLK	-	-	-	-



mm	APVD		5.16.2019
UNIT	CHKD		
2:1	DRN		
SCALE	SIGNATURE		DATE

**PM STEPPER MOTOR**

**15PM20L02-SG100**